



Tiffane Van Der Westhuizen
0824916309
tiffanevdw@delucia.co.za

Contact **Kempton Park**

011 975 5911

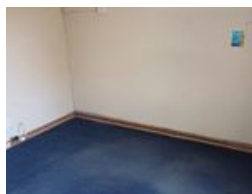
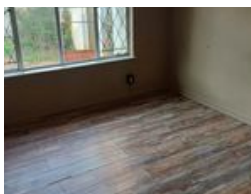
Entrance 9,
Gleneagles Office Park,
Koorsboom Ave,
Glen Erasmia x22,
Kempton Park,
1619

NEW



SOLE MANDATE

Web Ref RL3667



R12,500 pm

Lease Period 12 months
Annual Escalation -

Availability Immediately **Deposit** -

 4  2

Versatile Commercial/Residential Property for Rent – 4 Bedrooms, 2 Bathrooms

Unlock the potential of this spacious and adaptable property, perfectly suited for either commercial or residential use. Located in a convenient and accessible area, this well-maintained space offers the flexibility to suit your needs—whether you're looking to run a business, accommodate staff, or create a comfortable family home.

Key Features:

- 4 bedrooms/offices
- 2 bathrooms one with a bath and one with a shower
- Spacious lounge area
- Dining room
- Kitchen
- Ample natural light throughout
- Large garden
- Covered patio
- Secure premises with easy covered parking

Ideal for businesses such as consulting firms, wellness practices, or shared office spaces. Also perfect for families seeking a large home with room to grow

Features

Pets Allowed	Yes		
Interior		Exterior	
Bedrooms	4	Carports / Parkings	5
Bathrooms	2	Security	Yes
Kitchens	1	Pool	No
Recep. Rooms	2	Views	False
Studies	1		
Furnished	No		