



Leandri Schaefer
0725904729
leandris@delucia.co.za

Contact Kempton Park

011 975 5911

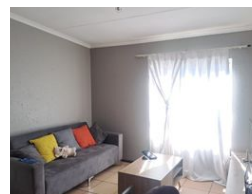
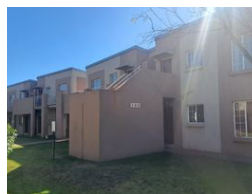
Entrance 9,
Gleneagles Office Park,
Koorsboom Ave,
Glen Erasmia x22,
Kempton Park,
1619

2 Bedroom Townhouse To Let in Brentwood Park

NEW



Web Ref RL3688



R6,500 pm

Lease Period 12 months
Annual Escalation -

Availability 01 Jul 2025 Deposit -

 2  1

Townhouse available in Brentwood Park

Neat 2-bedroom townhouse available in Brentwood Park.

The property consists of the following:

Spacious lounge/dining area
Neat kitchen
2 bedrooms and 1 bathroom.

Kindly note that the rental is excluding of any water, refuse, sewerage, and communal utility charges.

The electricity to the unit is metered, and each unit has two covered parking.

4 occupants allowed

This unit is pet friendly for 1 small dog or cat upon approval from the Body Corporate.
Subject to a credit check, confirmation of employment and payment of deposit.

Cost breakdown before moving in:

Features

Interior

Bedrooms	2
Bathrooms	1
Kitchens	1
Recep. Rooms	1
Furnished	No

Exterior

Carports / Parkings	2
Security	Yes
Pool	Yes
Views	False