

**Leandri Schaefer**  
0725904729  
leandris@delucia.co.za

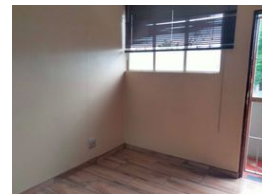
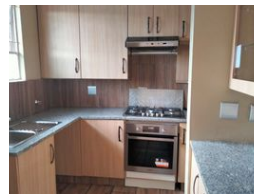
Contact Kempton Park

011 975 5911

Entrance 9,  
Gleneagles Office Park,  
Koorsboom Ave,  
Glen Erasmia x22,  
Kempton Park,  
1619



Web Ref RL3576



R6,800 pm

Lease Period 12 months  
Annual Escalation -

Availability Immediately

Deposit -

 3  1

## Renovated First Floor Unit with Beautiful Kitchen

Lovely renovated first-floor unit.

Spacious open plan lounge and dining area with stunning kitchen and gas HOB, 3 bedrooms, bathroom with a shower only and a separate toilet.

Covered parking, communal pool and 24-hour security.

A minimum salary of R21 000 per month net is required to apply for the property.

Monthly rental excludes water, sewerage, refuse, security & communal utility charges.

Only 4 occupants including children, are allowed per unit.

Unfortunately, the unit is not pet-friendly.

All applications are subject to a credit check, confirmation of employment/income, and deposit payment.

Viewings strictly by appointment!

## Features

### Interior

Bedrooms	3
Bathrooms	1
Kitchens	1
Recep. Rooms	2
Furnished	No

### Exterior

Carports / Parkings	1
Security	Yes
Pool	Yes
Views	False

