

Martie Van Wyk
0842065540
martieww@delucia.co.za

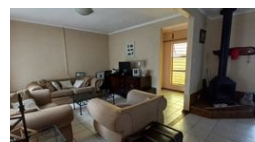
Contact Kempton Park

011 975 5911

Entrance 9,
Gleneagles Office Park,
Koorsboom Ave,
Glen Erasmia x22,
Kempton Park,
1619



Web Ref RL3632



R1,640,000

4 Bedrooms 2 Bathrooms 2 Carports

Monthly Bond Repayment R16,649.75

Calculated over 20 years at 10.75% with no deposit.

Transfer Costs R52,153.00 **Bond Costs** R30,875.00

These calculations are only a guide. Please ask your conveyancer for exact calculations.

Monthly Levy R615 **Monthly Rates** R1,440

House for sale in Van Riebeeck Park

Nestled in a sought-after boomed area with 24-hour access control, this spacious 4-bedroom family home offers security, comfort, and convenience. Set on a large stand with a beautifully established garden, it provides ample space for children to play and outdoor entertaining. The home features generous living areas, a well-equipped kitchen, and four well-sized bedrooms, including a main en-suite. A covered patio overlooks the lush greenery, creating a peaceful retreat. With excellent security, a prime location, and easy access to top schools, shopping centers, and major routes, this home is perfect for families looking for space and tranquility.

Features

Pets Allowed	Yes			
Interior		Exterior		Sizes
Bedrooms	4	Garages	2	Land Size
Bathrooms	2	Carports / Parkings	2	1,000m²
Kitchens	1	Security	Yes	
Recep. Rooms	2	Pool	No	
Furnished	No	Views	False	

