



Charlotte Scheepers
0692172126
charlottes@delucia.co.za

Contact Kempton Park

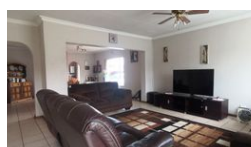
011 975 5911

Entrance 9,
Gleneagles Office Park,
Koorsboom Ave,
Glen Erasmia x22,
Kempton Park,
1619

4 Bedroom House For Sale in Van Riebeeck Park



Web Ref RL3626



R2,250,000

🛏️ 4 🛁 2 🚗 2

Monthly Bond Repayment R22,842.65

Calculated over 20 years at 10.75% with no deposit.

Transfer Costs R95,138.00 **Bond Costs** R36,530.00

These calculations are only a guide. Please ask your conveyancer for exact calculations.

Monthly Rates R1,805

House for sale in Van Riebeeck Park

This beautiful 4-bedroom family home offers spacious and comfortable living, perfect for those who love to entertain and relax. The open-plan design features a modern kitchen, generous dining area, and a cozy lounge that opens onto a covered patio, overlooking a lush garden and sparkling swimming pool. The well-sized bedrooms provide ample storage, with the master suite boasting a private en-suite. A double garage ensures convenience, while the secure setting offers peace of mind. With plenty of space for children to play and family gatherings to enjoy, this home is the ideal blend of comfort, style, and functionality.

Features

Pets Allowed	Yes				
Interior		Exterior		Sizes	
Bedrooms	4	Garages	2	Land Size	1,000m²
Bathrooms	2	Carports / Parkings	2		
Kitchens	1	Security	No		
Recep. Rooms	3	Dom. Accom.	1		
Studies	1	Pool	Yes		
Furnished	No	Views	False		

