

**Charlotte Scheepers**  
0692172126  
charlottes@delucia.co.za

Contact **Kempton Park**

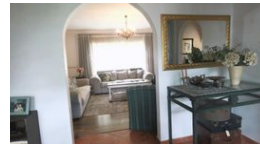
011 975 5911

Entrance 9,  
Gleneagles Office Park,  
Koorsboom Ave,  
Glen Erasmia x22,  
Kempton Park,  
1619

## 4 Bedroom House For Sale in Van Riebeeck Park



Web Ref RL3600



**R2,595,000**

 4  2  3

**Monthly Bond Repayment** R26,345.19

Calculated over 20 years at 10.75% with no deposit.

**Transfer Costs** R123,320.00 **Bond Costs** R38,415.00

These calculations are only a guide. Please ask your conveyancer for exact calculations.

**Monthly Rates** R2,000

### House for sale in Van Riebeeck Park

Step into this stunning and meticulously maintained 4-bedroom family home, where modern elegance meets practical comfort. Boasting a spacious open-plan layout, this home features sleek, contemporary finishes throughout. The heart of the home is a stylish, well-appointed kitchen with high-end appliances, ample storage, and a center island—perfect for entertaining and family gatherings.

The generously sized bedrooms offer built-in cupboards, with the master suite providing a luxurious en-suite retreat. The expansive living and dining areas flow seamlessly onto a beautifully landscaped garden, ideal for outdoor relaxation and entertaining.

Adding incredible value is a full granny flat, complete with its own entrance, living space, kitchen, and bathroom—perfect for extended family or rental income. With three secure garages,...

### Features

**Pets Allowed** Yes

#### Interior

Bedrooms	4
Bathrooms	2
Kitchens	1
Recep. Rooms	2
Furnished	No

#### Exterior

Garages	3
Carports / Parkings	1
Security	Yes
Pool	No
Views	False

#### Sizes

Land Size	1,583m <sup>2</sup>
-----------	---------------------

