



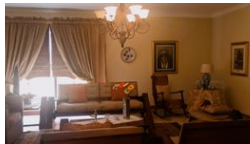
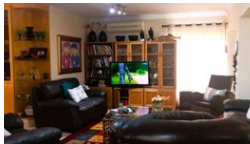
Charlotte Scheepers
0692172126
charlottes@delucia.co.za

Contact Kempton Park
011 975 5911

Entrance 9,
Gleneagles Office Park,
Koorsboom Ave,
Glen Erasmia x22,
Kempton Park,
1619



Web Ref RL3599



R4,380,000

5 4 2

Monthly Bond Repayment R44,467.03

Calculated over 20 years at 10.75% with no deposit.

Transfer Costs R327,641.00 **Bond Costs** R55,380.00

These calculations are only a guide. Please ask your conveyancer for exact calculations.

Monthly Levy R1,671 **Monthly Rates** R1,536

House for sale in Bishops Court, Van Riebeeck Park

This stunning 5-bedroom, 4-bathroom luxury home is a masterpiece of modern design, offering elegance, comfort, and security in an exclusive estate. Featuring open-plan living spaces with seamless indoor-outdoor flow, the home is designed for both relaxation and entertaining. The spacious lounge and dining areas are bathed in natural light, complemented by high-end finishes and sleek, contemporary fixtures. A gourmet kitchen with top-of-the-line appliances, a large island, and ample storage makes cooking a pleasure.

The generously sized bedrooms include a lavish master suite with a walk-in closet and spa-like en-suite bathroom. Each bathroom is exquisitely designed with premium fittings. Expansive sliding doors open to a beautifully landscaped garden and entertainment area, perfect for hosting guests.

Located within a...

Features

Pets Allowed	Yes				
Interior		Exterior		Sizes	
Bedrooms	5	Garages	2	Floor Size	273m²
Bathrooms	4	Carports / Parkings	2	Land Size	770m²
Kitchens	1	Security	Yes		
Recep. Rooms	3	Pool	No		
Furnished	No	Views	False		

