



**Charlotte Scheepers**  
0692172126  
charlottes@delucia.co.za

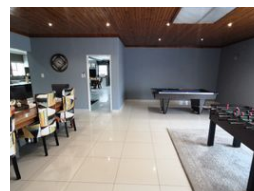
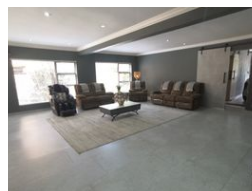
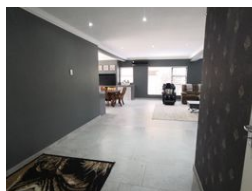
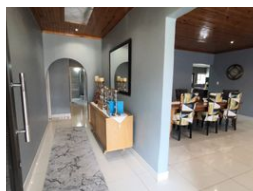
Contact Kempton Park

011 975 5911

Entrance 9,  
Gleneagles Office Park,  
Koorsboom Ave,  
Glen Erasmia x22,  
Kempton Park,  
1619



Web Ref RL3563



R3,650,000

5 2 2

**Monthly Bond Repayment** R37,055.86

Calculated over 20 years at 10.75% with no deposit.

**Transfer Costs** R240,382.00 **Bond Costs** R49,725.00

These calculations are only a guide. Please ask your conveyancer for exact calculations.

**Monthly Rates** R1,892

### House for sale in Van Riebeeck Park

Step into luxury with this spacious and modern 5-bedroom family home in a sought-after area. Designed for comfort and style, the open-plan living and dining areas create a seamless flow, perfect for family gatherings and entertaining. A dedicated entertainment area adds to the charm, offering a space to host unforgettable moments. The beautifully landscaped garden surrounds a heated pool, providing a private oasis for relaxation year-round. Each bedroom is generously sized, with modern finishes throughout the home. Conveniently located near top schools, shopping, and amenities, this property offers the perfect blend of contemporary living and prime location.

### Features

Interior		Exterior		Sizes	
Bedrooms	5	Garages	2	Land Size	1,454m²
Bathrooms	2	Security	Yes		
Kitchens	1	Dom. Accom.	1		
Recep. Rooms	3	Pool	Yes		
Studies	3	Views	False		
Furnished	No				

