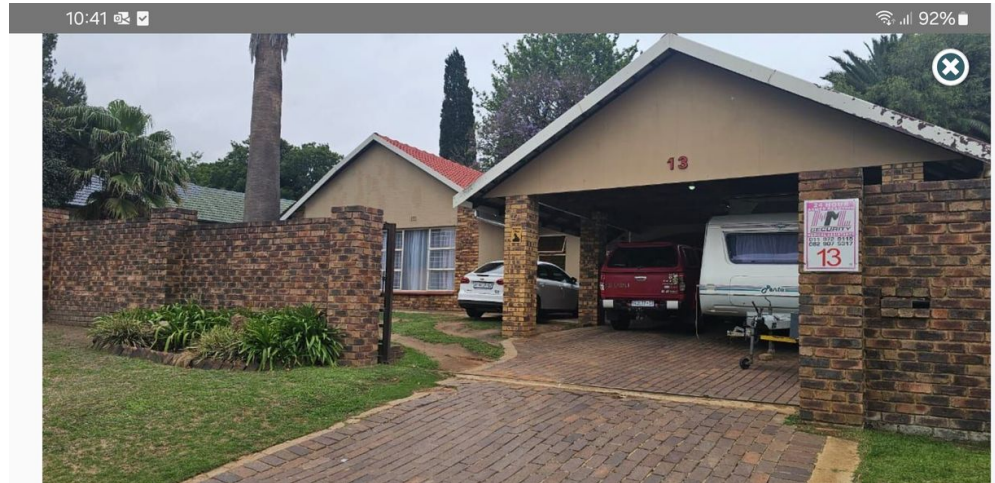


Charlotte Scheepers
0692172126
charlottes@delucia.co.za

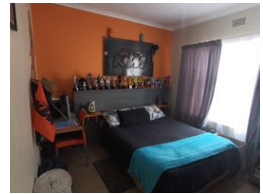
Contact Kempton Park

011 975 5911

Entrance 9,
Gleneagles Office Park,
Koorsboom Ave,
Glen Erasmia x22,
Kempton Park,
1619



Web Ref RL3562



R1,640,000

4 Bedrooms 2 Bathrooms 2 Carports / Parkings

Monthly Bond Repayment R16,649.75

Calculated over 20 years at 10.75% with no deposit.

Transfer Costs R52,153.00 **Bond Costs** R30,875.00

These calculations are only a guide. Please ask your conveyancer for exact calculations.

Monthly Rates R1,440

House for sale in Van Riebeeck Park

This well-priced 4-bedroom family home offers incredible value in a sought-after suburb. Neatly maintained and ready to move in, it's perfect for families seeking comfort and convenience. The home features spacious bedrooms, a bright and airy living area, and a functional kitchen, all designed to meet your everyday needs. The generous yard provides space for children to play or for future enhancements. Located close to schools, shopping centers, and major transport routes, this property combines affordability with an excellent location. Don't miss the opportunity to own a home in this desirable neighbourhood at an unbeatable price.

Features

Interior		Exterior		Sizes	
Bedrooms	4	Garages	2	Land Size	1,000m²
Bathrooms	2	Carports / Parkings	2		
Kitchens	1	Security	No		
Recep. Rooms	2	Pool	No		
Furnished	No	Views	False		

