

Charlotte Scheepers
0692172126
charlottes@delucia.co.za

Contact Kempton Park

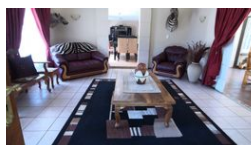
011 975 5911

Entrance 9,
Gleneagles Office Park,
Koorsboom Ave,
Glen Erasmia x22,
Kempton Park,
1619

4 Bedroom House For Sale in Van Riebeeck Park



Web Ref RL3561



R2,500,000

🛏 4 🚿 2 🏠 2

Monthly Bond Repayment R25,380.72

Calculated over 20 years at 10.75% with no deposit.

Transfer Costs R115,720.00 **Bond Costs** R38,415.00

These calculations are only a guide. Please ask your conveyancer for exact calculations.

Monthly Rates R1,490

House for sale in Van Riebeeck Park

Discover your dream family home in a secure, boomed-off area with 24/7 guards and strict access control. This expansive 4-bedroom residence is designed for comfort and versatility, featuring four spacious living rooms perfect for entertaining or relaxing. The modern layout flows seamlessly, creating an inviting atmosphere throughout. Outdoors, a large, beautifully maintained garden provides plenty of space for children to play or for hosting gatherings. The highlight? A sparkling swimming pool, ideal for unwinding on sunny days. Conveniently located near top schools and amenities, this property offers the perfect blend of luxury, security, and space for your family's lifestyle. Full solar and 90% off the grid!

Features

Interior

Bedrooms	4
Bathrooms	2
Kitchens	1
Recep. Rooms	3
Studies	1
Furnished	No

Exterior

Garages	2
Carports / Parkings	1
Security	Yes
Dom. Accom.	1
Pool	Yes
Views	False

Sizes

Land Size	1,070m ²
-----------	---------------------

