

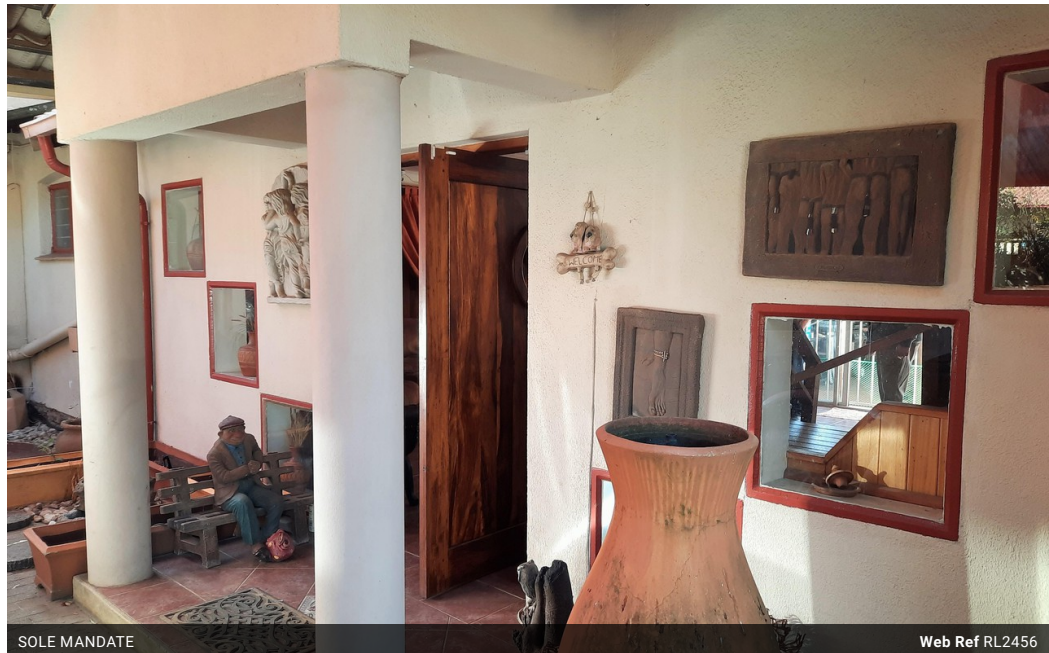
Joey Alston
0832636832
joeya@delucia.co.za

Contact Kempton Park

011 975 5911

Entrance 9,
Gleneagles Office Park,
Koorsboom Ave,
Glen Erasmia x22,
Kempton Park,
1619

3 Bedroom House For Sale in Van Riebeeck Park



SOLE MANDATE

Web Ref RL2456



R2,100,000

3 2 2

Monthly Bond Repayment R21,319.81

Calculated over 20 years at 10.75% with no deposit.

Transfer Costs R83,947.00 **Bond Costs** R34,625.00

These calculations are only a guide. Please ask your conveyancer for exact calculations.

Monthly Levy R630 **Monthly Rates** R1,556

House for sale in Van Riebeeck Park

LARGE FAMILY LIVING WITH 2 FULL GRANNY FLATS. This enormous home offers 3 bedrooms, a sparkling pool with entertainment area, plus 2 granny flats, one with 1 bedrooms, and the other with 2 bedrooms. Situated in a boomed-off area. Make the call today to VIEW EXCLUSIVELY

Features

Interior

Bedrooms	3
Bathrooms	2
Kitchens	1
Recep. Rooms	3
Furnished	No

Exterior

Garages	2
Carports / Parkings	4
Security	Yes
Pool	Yes

Sizes

Floor Size	475m ²
Land Size	1,143m ²

