



**Tinus Coetzer**  
0845718936  
tinusc@delucia.co.za

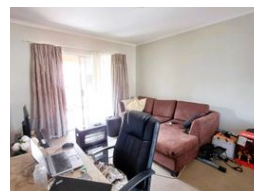
Contact Kempton Park

011 975 5911

Entrance 9,  
Gleneagles Office Park,  
Koorsboom Ave,  
Glen Erasmia x22,  
Kempton Park,  
1619



Web Ref RL3658



R780,000

2 2

**Monthly Bond Repayment** R8,051.07  
Calculated over 20 years at 11% with no deposit.

**Transfer Costs** R25,898.00 **Bond Costs** R19,565.00

These calculations are only a guide. Please ask your conveyancer for exact calculations.

**Monthly Levy** R1,156 **Monthly Rates** R455

## Townhouse for sale in Terenure

This stylish 2-bedroom, 2-bathroom townhouse offers contemporary living with sleek, modern finishes throughout. The open-plan design seamlessly connects the kitchen, dining, and living areas, creating a bright and spacious flow ideal for relaxed living and entertaining. Step out onto the expansive balcony, complete with a built-in braai, perfect for hosting guests or enjoying sunset views. Both bedrooms are generously sized with ample built-in storage, while the bathrooms are elegantly designed with quality fixtures. Situated in a secure and well-maintained complex, this modern gem offers convenience, comfort, and a lock-up-and-go lifestyle close to shopping centres, schools, and major transport routes.

## Features

### Interior

Bedrooms	2
Bathrooms	2
Kitchens	1
Recep. Rooms	1
Furnished	No

### Exterior

Carports / Parkings	1
Security	Yes
Pool	No
Views	False

### Sizes

Floor Size	78m²
------------	------

