



Martie Van Wyk
0842065540
martieww@delucia.co.za

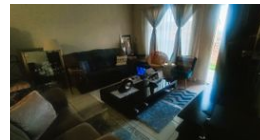
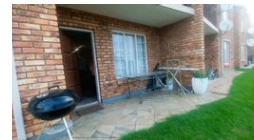
Contact **Kempton Park**

011 975 5911

Entrance 9,
Gleneagles Office Park,
Koorsboom Ave,
Glen Erasmia x22,
Kempton Park,
1619



Web Ref RL3641



R670,000

 2  1

Monthly Bond Repayment R6,802.03

Calculated over 20 years at 10.75% with no deposit.

Transfer Costs R23,730.00 **Bond Costs** R17,680.00

These calculations are only a guide. Please ask your conveyancer for exact calculations.

Ground floor townhouse for sale in Terenure

This modern 2-bedroom ground-floor townhouse offers stylish open-plan living in a secure complex with 24-hour guards. The contemporary kitchen flows into a spacious lounge, creating a seamless and inviting space. Enjoy the convenience of a private garden, excellent security, and a prime location close to essential amenities.

Features

Interior

Bedrooms	2
Bathrooms	1
Kitchens	1
Recep. Rooms	1
Furnished	No

Exterior

Carpports / Parkings	1
Security	Yes
Pool	No
Views	False

Sizes

Floor Size	65m ²
------------	------------------