

Charlotte Scheepers
0692172126
charlottes@delucia.co.za

Contact Kempton Park

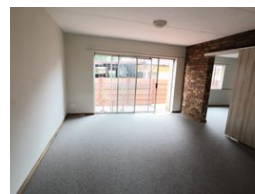
011 975 5911

Entrance 9,
Gleneagles Office Park,
Koorsboom Ave,
Glen Erasmia x22,
Kempton Park,
1619

3 Bedroom Townhouse For Sale in Terenure



Web Ref RL3552



R995,000

3 1 1

Monthly Bond Repayment R10,101.53

Calculated over 20 years at 10.75% with no deposit.

Transfer Costs R30,412.00 **Bond Costs** R23,335.00

These calculations are only a guide. Please ask your conveyancer for exact calculations.

Monthly Levy R1,319 **Monthly Rates** R931

Townhouse for sale in Terenure

This charming 3-bedroom, 2-bathroom simplex townhouse offers secure and comfortable living in a well-maintained complex. Perfectly designed for convenience and ease, this home features an open-plan layout that seamlessly connects the living areas, creating a warm and inviting atmosphere. The bedrooms are well-sized with ample natural light, and the master bedroom includes an en-suite bathroom. With the added benefit of a lockup garage and 24-hour security, you'll enjoy peace of mind in a safe community. Ideal for families or professionals, this townhouse is close to essential amenities, schools, and shopping centers, offering both comfort and convenience.

Features

Pets Allowed	Yes				
Interior		Exterior		Sizes	
Bedrooms	3	Garages	1	Floor Size	118m²
Bathrooms	1	Carports / Parkings	1		
Kitchens	1	Security	Yes		
Recep. Rooms	2	Pool	No		
Furnished	No	Views	False		

