

Jacqui De Lorme
0655763351
jacquidl@delucia.co.za

Contact Kempton Park

011 975 5911

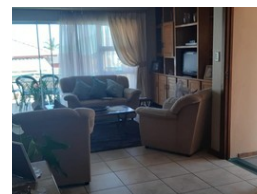
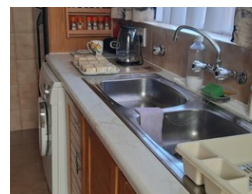
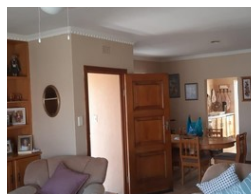
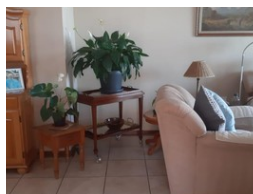
Entrance 9,
Gleneagles Office Park,
Koorsboom Ave,
Glen Erasmia x22,
Kempton Park,
1619

2 Bedroom Townhouse For Sale in Terenure



SOLE MANDATE

Web Ref RL2047



R1,150,000

 2
  2
  1

Monthly Bond Repayment R11,675.13

Calculated over 20 years at 10.75% with no deposit.

Transfer Costs R32,749.00 **Bond Costs** R25,220.00

These calculations are only a guide. Please ask your conveyancer for exact calculations.

Monthly Levy R3,100 **Monthly Rates** R500

Townhouse for sale in Retirement Village, Terenure

RETIRE IN LUXURIOUS COMFORT. This magnificent, 99 square meter simplex townhouse offer spacious and comfortable living in a secure complex with 24 hour guards. Facilities include a heated therapeutic pool, frail care, a dining room for daily meals, putt-putt course, snooker room, a library and a lot more. Make the call today to VIEW EXCLUSIVELY

Features

Interior

Bedrooms	2
Bathrooms	2
Kitchens	1
Recep. Rooms	2
Furnished	No

Exterior

Garages	1
Security	Yes
Pool	Yes
Views	False

Sizes

Floor Size	99m ²
------------	------------------

