

Jacqui De Lorme
0655763351
jacquidl@delucia.co.za

Contact Kempton Park

011 975 5911

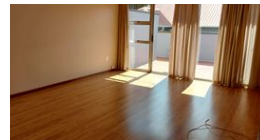
Entrance 9,
Gleneagles Office Park,
Koorsboom Ave,
Glen Erasmia x22,
Kempton Park,
1619

1 Bedroom Retirement Unit For Sale in Terenure



SOLE MANDATE

Web Ref RL3228



R750,000

1 Bed 1 Bath 1 Car

Monthly Bond Repayment R7,614.22

Calculated over 20 years at 10.75% with no deposit.

Transfer Costs R25,898.00 **Bond Costs** R19,565.00

These calculations are only a guide. Please ask your conveyancer for exact calculations.

Monthly Levy R2,850 **Monthly Rates** R500

Retirement Unit For Sale In Terenure

COMFORTABLE RETIREMENT UNIT in a secure complex with great facilities. This unit offers a large and sunny bedroom, open plan living and dining room, large kitchen and large bathroom. A Private veranda looks out onto beautiful green lawns. Make the call today to VIEW EXCLUSIVELY

Features

Pets Allowed Yes

Interior

Bedrooms	1
Bathrooms	1
Kitchens	1
Recep. Rooms	2
Furnished	No

Exterior

Garages	1
Security	Yes
Pool	Yes
Views	False

Sizes

Floor Size	69m ²
------------	------------------

