

Jacqui De Lorme
0655763351
jacquidl@delucia.co.za

Contact Kempton Park

011 975 5911

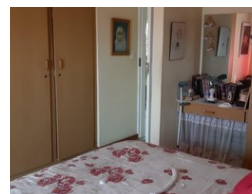
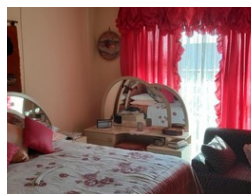
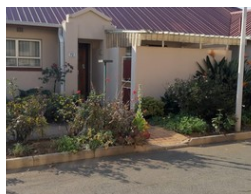
Entrance 9,
Gleneagles Office Park,
Koorsboom Ave,
Glen Erasmia x22,
Kempton Park,
1619

1 Bedroom Retirement Unit For Sale in Terenure



SOLE MANDATE

Web Ref RL2213



R800,000

 1
  1
  1

Monthly Bond Repayment R8,121.83

Calculated over 20 years at 10.75% with no deposit.

Transfer Costs R25,898.00 **Bond Costs** R19,565.00

These calculations are only a guide. Please ask your conveyancer for exact calculations.

Monthly Levy R2,300 **Monthly Rates** R370

Retirement unit for sale in Terenure

RETIREMENT HAS NEVER LOOKED THIS GOOD. This spacious 1 bedroom unit offers magnificent living in a safe and secure environment. 24 Hour security. Frail care. Dining facilities. Excellent value for money. Make the call today to VIEW EXCLUSIVELY

Features

Interior

Bedrooms	1
Bathrooms	1
Kitchens	1
Recep. Rooms	2
Furnished	No

Exterior

Garages	1
Security	Yes
Pool	Yes
Views	False

Sizes

Floor Size	69m ²
------------	------------------

