



Betty Ramoroka
0726225374
bettyr@delucia.co.za

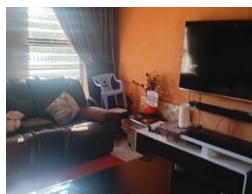
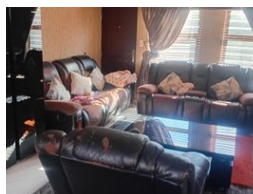
Contact **Kempton Park**

011 975 5911

Entrance 9,
Gleneagles Office Park,
Koorsboom Ave,
Glen Erasmia x22,
Kempton Park,
1619



Web Ref RL3680



R1,200,000

Monthly Bond Repayment R12,182.75

Calculated over 20 years at 10.75% with no deposit.

Transfer Costs R32,749.00 **Bond Costs** R25,220.00

These calculations are only a guide. Please ask your conveyancer for exact calculations.

 3  2  2

Cluster home for sale in Rhodesfield

This modern 3-bedroom, 2-bathroom cluster home offers comfort and security in a sought-after gated community. Featuring a spacious open-plan living area, the home includes a well-appointed kitchen and double garage. The master bedroom boasts an en-suite bathroom, while two additional bedrooms share a second full bathroom. A private garden provides a tranquil outdoor space, perfect for relaxation or entertaining. The property is situated in a secure complex with 24-hour guarded access, offering peace of mind for residents. Ideal for families or professionals seeking a low-maintenance lifestyle in a safe, convenient location.

Features

Pets Allowed Yes

Interior

Bedrooms	3
Bathrooms	2
Kitchens	1
Recep. Rooms	1
Furnished	No

Exterior

Garages	2
Carports / Parkings	2
Security	Yes
Pool	No
Views	False