



**Betty Ramoroka**  
0726225374  
bettyr@delucia.co.za

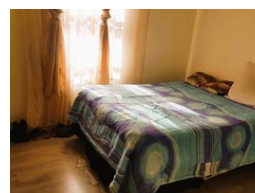
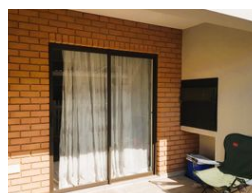
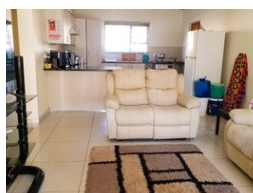
Contact Kempton Park

011 975 5911


Entrance 9,  
Gleneagles Office Park,  
Koorsboom Ave,  
Glen Erasmia x22,  
Kempton Park,  
1619



Web Ref RL3495



**R1,145,000**

 3  2

**Monthly Bond Repayment** R11,624.37

Calculated over 20 years at 10.75% with no deposit.

**Transfer Costs** R32,749.00 **Bond Costs** R25,220.00

These calculations are only a guide. Please ask your conveyancer for exact calculations.

**Monthly Levy** R1,500

## Townhouse for sale in Pomona

This modern and spacious ground-floor unit offers open-plan living at its finest, providing a seamless flow between the living, dining, and kitchen areas. Located in a secure complex with 24-hour guards and strict access control, this home ensures peace of mind for its residents. The unit is designed for comfort and convenience, with contemporary finishes throughout. Large windows allow natural light to flood the space, creating a bright and welcoming atmosphere. The complex offers well-maintained communal areas, perfect for relaxation and socializing. Ideal for those seeking a secure and stylish living environment in a prime location.

## Features

### Interior

Bedrooms	3
Bathrooms	2
Kitchens	1
Recep. Rooms	1
Furnished	No

### Exterior

Carports / Parkings	2
Security	Yes
Pool	No
Views	False

