

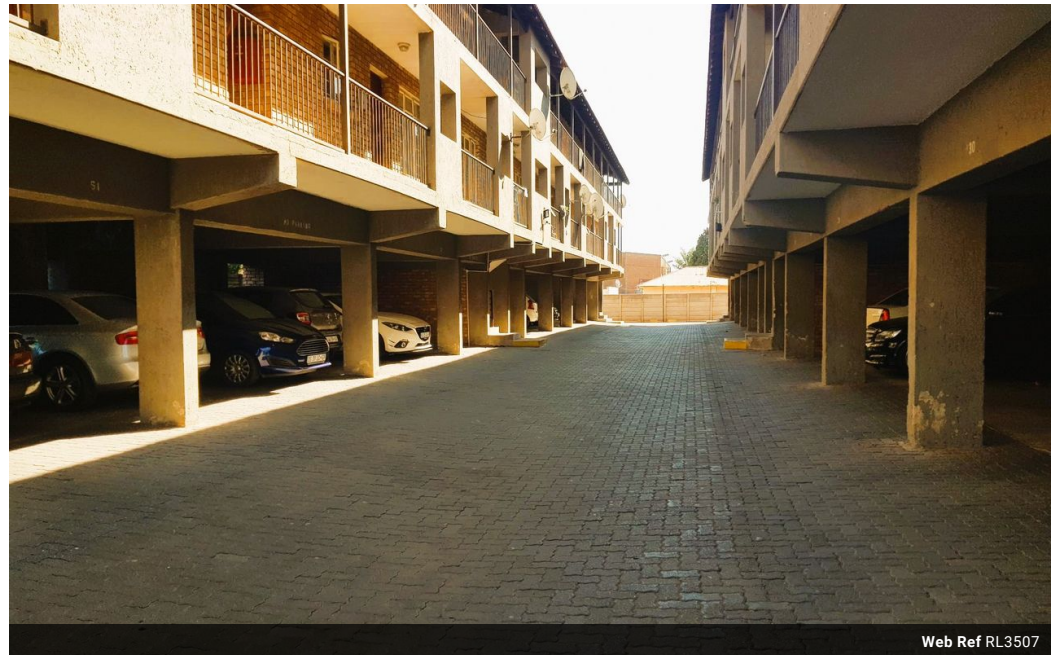


Betty Ramoroka
0726225374
bettyr@delucia.co.za

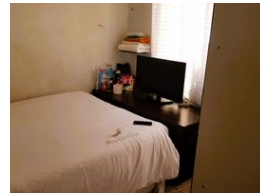
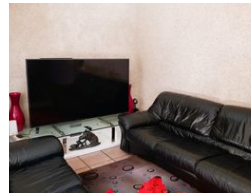
Contact Kempton Park

011 975 5911

Entrance 9,
Gleneagles Office Park,
Koorsboom Ave,
Glen Erasmia x22,
Kempton Park,
1619



Web Ref RL3507



R440,000

2 1

Monthly Bond Repayment R4,467.01

Calculated over 20 years at 10.75% with no deposit.

Transfer Costs R17,928.00 **Bond Costs** R12,935.00

These calculations are only a guide. Please ask your conveyancer for exact calculations.

Flat for sale in Kempton Park

This neat and modern 2-bedroom flat is perfectly located in central Kempton Park, offering convenience and comfort in a secure complex. The open-plan living area creates a bright and spacious environment, seamlessly connecting the living, dining, and kitchen spaces. Both bedrooms are well-sized with contemporary finishes, providing a cozy retreat. The complex features secure basement parking, ensuring your vehicle is safe and easily accessible. Situated close to all amenities, including shopping centers, schools, and public transport, this flat is ideal for those seeking modern living in a prime location. Enjoy the blend of style, security, and convenience this home offers.

Features

Interior

Bedrooms	2
Bathrooms	1
Kitchens	1
Recep. Rooms	1
Furnished	No

Exterior

Carports / Parkings	1
Security	Yes
Pool	No
Views	False

Sizes

Floor Size	60m ²
------------	------------------