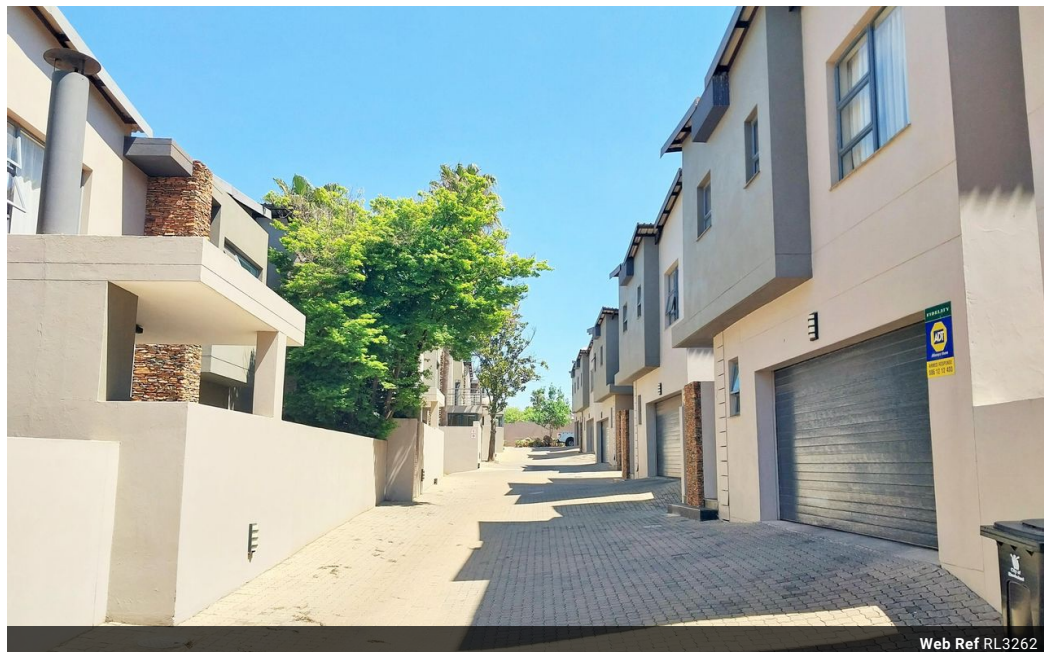


Joey Alston  
0832636832  
joeya@delucia.co.za

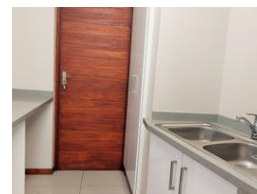
Contact Kempton Park

011 975 5911

Entrance 9,  
Gleneagles Office Park,  
Koorsboom Ave,  
Glen Erasmia x22,  
Kempton Park,  
1619



Web Ref RL3262



**R2,290,000**

🛏️ 4 🚿 2.5 🚗 2

**Monthly Bond Repayment** R23,248.74

Calculated over 20 years at 10.75% with no deposit.

**Transfer Costs** R97,538.00 **Bond Costs** R36,530.00

These calculations are only a guide. Please ask your conveyancer for exact calculations.

**Monthly Levy** R1,012 **Monthly Rates** R1,710

### Townhouse for sale in Glen Marais

Embrace contemporary luxury in this stunning 4-bedroom duplex. Exquisite modern finishes adorn every corner, elevating your living experience. A spacious double garage ensures convenience and ample storage. Step outside to your private garden oasis, a tranquil retreat for relaxation and outdoor gatherings. Nestled within a secure complex, your peace of mind is assured. With four bedrooms, this home offers versatility for families or professionals seeking space and sophistication. Experience the perfect blend of style and security in this sought-after residence, where every detail has been meticulously crafted to provide the ultimate in modern living.

### Features

<b>Pets Allowed</b>	Yes			
<b>Interior</b>		<b>Exterior</b>		<b>Sizes</b>
Bedrooms	4	Garages	2	Floor Size
Bathrooms	2.5	Security	Yes	230m²
Kitchens	1	Pool	No	
Recep. Rooms	3			
Furnished	No			

