

Joey Alston
0832636832
joeya@delucia.co.za

Contact Kempton Park

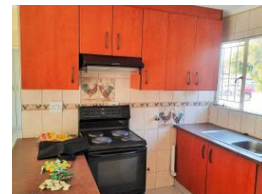
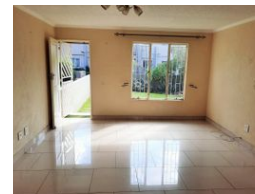
011 975 5911

Entrance 9,
Gleneagles Office Park,
Koorsboom Ave,
Glen Erasmia x22,
Kempton Park,
1619



SOLE MANDATE

Web Ref RL2777



R750,000

2 1

Monthly Bond Repayment R7,614.22

Calculated over 20 years at 10.75% with no deposit.

Transfer Costs R25,898.00 **Bond Costs** R19,565.00

These calculations are only a guide. Please ask your conveyancer for exact calculations.

Monthly Levy R1,645 **Monthly Rates** R400

Townhouse for sale in Glen Marais

YOU CAN'T AFFORD NOT TO PHONE. This modern and secure 2 bedroom ground floor unit is situated in a well-managed complex with excellent security and comfortable amenities. Perfect for the first-time buyer. Make the call today to VIEW EXCLUSIVELY

Features

Interior

Bedrooms	2
Bathrooms	1
Kitchens	1
Recep. Rooms	1
Furnished	No

Exterior

Carports / Parkings	1
Security	Yes
Pool	Yes

Sizes

Floor Size	61m²
------------	------

