

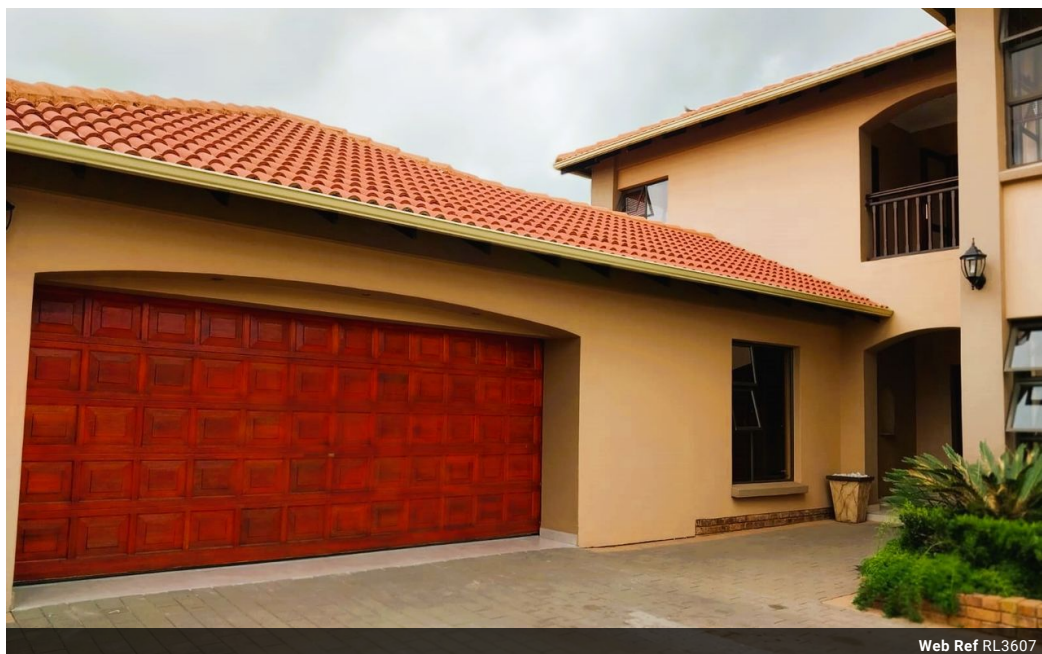


Charlotte Scheepers  
0692172126  
charlottes@delucia.co.za

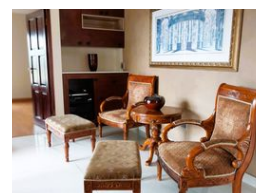
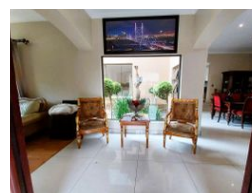
Contact Kempton Park

011 975 5911

Entrance 9,  
Gleneagles Office Park,  
Koorsboom Ave,  
Glen Erasmia x22,  
Kempton Park,  
1619



Web Ref RL3607



R4,620,000

4 Bedrooms 3 Bathrooms 2 Carports

Monthly Bond Repayment R46,903.58

Calculated over 20 years at 10.75% with no deposit.

Transfer Costs R358,377.00 Bond Costs R59,150.00

These calculations are only a guide. Please ask your conveyancer for exact calculations.

Monthly Levy R2,300 Monthly Rates R1,570

### House for sale in Glen Erasmia Boulevard

This stunning 4-bedroom, 3-bathroom family home offers the perfect blend of elegance and modern sophistication. Nestled in a secure estate with 24-hour guards, it provides peace of mind and an exclusive lifestyle. The open-plan living areas are designed for seamless flow, featuring high-end finishes and abundant natural light. A gourmet kitchen leads to spacious dining and lounge areas, ideal for entertaining. The luxurious bathrooms boast contemporary fittings, enhancing the home's stylish appeal. A double garage offers ample parking and storage. With top-tier security and refined finishes, this home is the epitome of comfort and style for discerning buyers.

### Features

Pets Allowed Yes

#### Interior

Bedrooms	4
Bathrooms	3
Kitchens	1
Recep. Rooms	3
Studies	1
Furnished	No

#### Exterior

Garages	2
Carports / Parkings	2
Security	Yes
Pool	No
Views	False

#### Sizes

Floor Size	461m <sup>2</sup>
Land Size	675m <sup>2</sup>

