

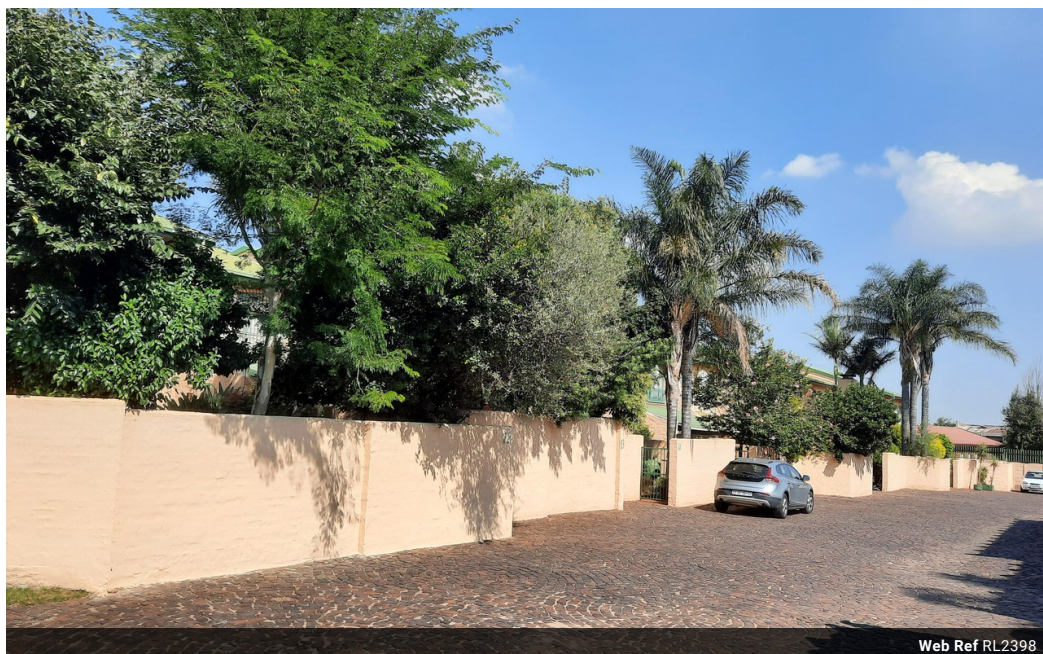


Joey Alston
0832636832
joeya@delucia.co.za

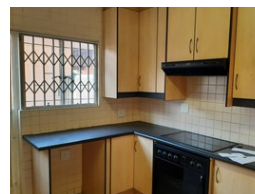
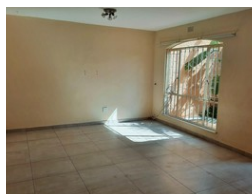
Contact Kempton Park

011 975 5911

Entrance 9,
Gleneagles Office Park,
Koorsboom Ave,
Glen Erasmia x22,
Kempton Park,
1619



Web Ref RL2398



R1,295,000

3 2 1

Monthly Bond Repayment R13,147.21

Calculated over 20 years at 10.75% with no deposit.

Transfer Costs R37,467.00 **Bond Costs** R27,105.00

These calculations are only a guide. Please ask your conveyancer for exact calculations.

Monthly Levy R1,000 **Monthly Rates** R820

Townhouse for sale in Aston Manor

A SPANISH-INSPIRE HACIENDA! This incredible 3 bedroom duplex townhouse offer exquisite living in a safe complex, with open plan living throughout, sunny bedrooms and a large private garden. Well-located close to all amenities. Make the call today to VIEW EXCLUSIVELY

Features

Interior

Bedrooms	3
Bathrooms	2
Kitchens	1
Recep. Rooms	2
Furnished	No

Exterior

Garages	1
Carports / Parkings	1
Security	Yes
Pool	No
Views	False

Sizes

Floor Size	136m ²
------------	-------------------

