



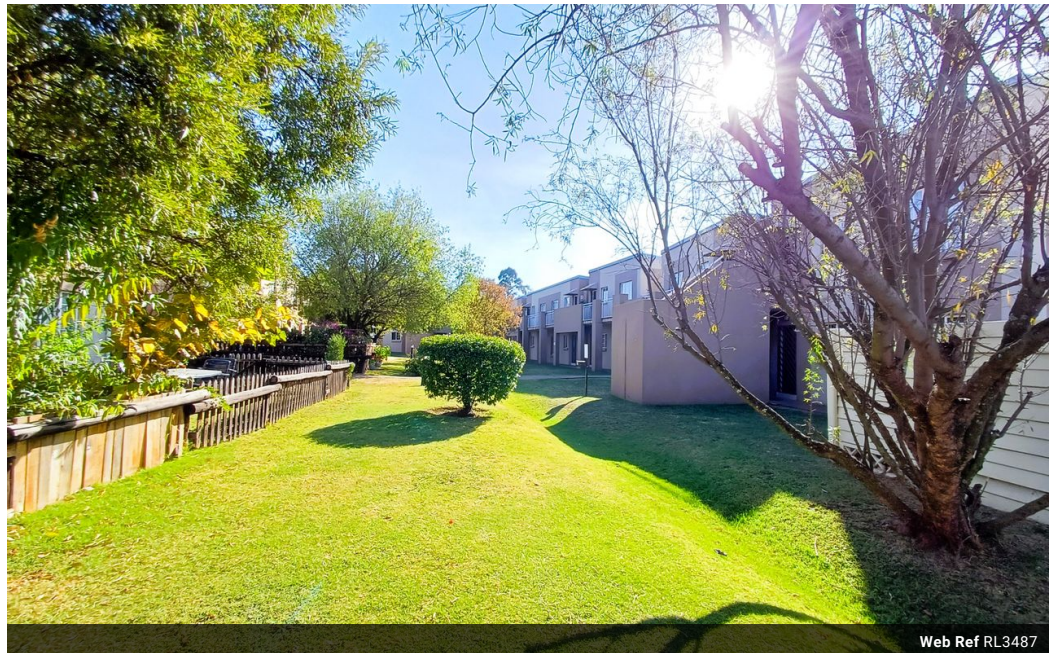
Tinus Coetzer
0845718936
tinusc@delucia.co.za

Contact **Kempton Park**

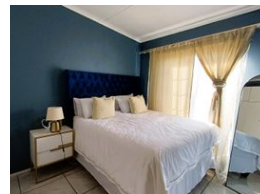
011 975 5911

Entrance 9,
Gleneagles Office Park,
Koorsboom Ave,
Glen Erasmia x22,
Kempton Park,
1619

2 Bedroom Townhouse For Sale in Brentwood



Web Ref RL3487



R470,000

 2  1

Monthly Bond Repayment R4,771.58

Calculated over 20 years at 10.75% with no deposit.

Transfer Costs R19,049.00 **Bond Costs** R13,910.00

These calculations are only a guide. Please ask your conveyancer for exact calculations.

Monthly Levy R1,520 **Monthly Rates** R350

Townhouse for sale in Brentwood Park

Discover comfort and security in this lovely 2-bedroom unit, set within a well-maintained complex featuring large open lawns and ample parking. The unit offers a spacious layout, perfect for modern living, with an inviting living area and well-appointed kitchen. Enjoy peace of mind with 24-hour guards and stringent access control, ensuring a safe environment for you and your loved ones. The expansive green spaces provide a serene setting for outdoor activities and relaxation. With convenient access to parking and close proximity to essential amenities, this unit is an ideal choice for those seeking a secure and comfortable lifestyle. Bonus features is solar geyser and a Complex borehole.

Features

Interior

Bedrooms	2
Bathrooms	1
Kitchens	1
Recep. Rooms	1
Furnished	No

Exterior

Carports / Parkings	1
Security	Yes
Pool	No
Views	False

Sizes

Floor Size	53m²
------------	------