



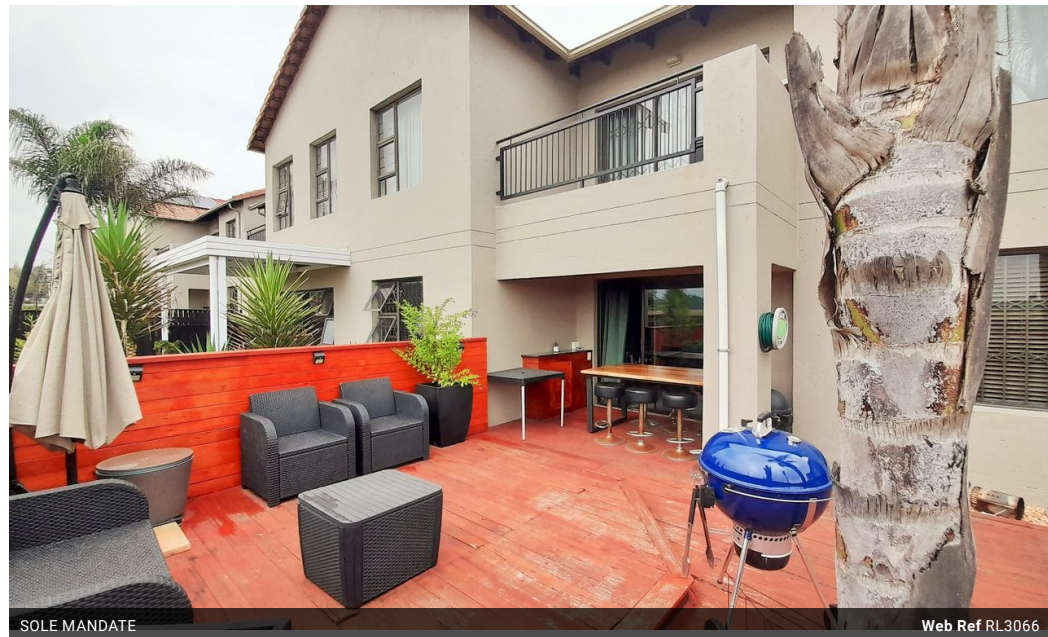
Nicolle De Lucia
0833212782
nicolledl@delucia.co.za

Contact Kempton Park

011 975 5911

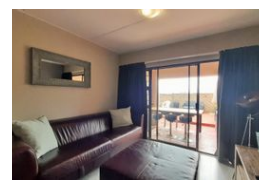
Entrance 9,
Gleneagles Office Park,
Koorsboom Ave,
Glen Erasmia x22,
Kempton Park,
1619

2 Bedroom Townhouse For Sale in Brentwood Park




SOLE MANDATE

Web Ref RL3066



R920,000

 2  1

Monthly Bond Repayment R9,340.11

Calculated over 20 years at 10.75% with no deposit.

Transfer Costs R30,412.00 **Bond Costs** R23,335.00

These calculations are only a guide. Please ask your conveyancer for exact calculations.

Monthly Levy R1,700 **Monthly Rates** R825

Townhouse for sale in Brentwood Park

GROUND FLOOR LIVING AT ITS BEST. This immaculate, spacious and modern unit offers comfortable living in a secure complex with 24 Hour guards and access control. Close to all amenities. Excellent value for money. Make the call today to VIEW EXCLUSIVELY

Features

Pets Allowed Yes

Interior

Bedrooms	2
Bathrooms	1
Kitchens	1
Recep. Rooms	1
Furnished	No

Exterior

Carports / Parkings	1
Security	Yes
Pool	No
Views	False

Sizes

Floor Size	72m²
------------	------

