



Kevin Gie
0824916309
keving@delucia.co.za

Contact Kempton Park

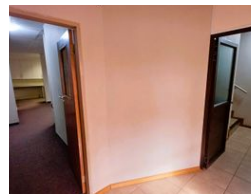
011 975 5911

Entrance 9,
Gleneagles Office Park,
Koorsboom Ave,
Glen Erasmia x22,
Kempton Park,
1619




SOLE MANDATE

Web Ref CL98



R101 per m²

Gross Monthly Rental R19,000 Excl. VAT

 8  0

Offices to rent in a secure office park in Croydon - Isando Area - Available Immediately

The space is self-contained with private entrance and parking (8 spaces). Carpeted and tiled throughout with blinds. Divided into 7/8 offices and an open plan area. All offices and the open plan area are air conditioned.

- Ladies and Gents bathrooms and kitchen facility.
 - Power is provided by the landlord on a metered basis – no interruptions.
 - Water back-up.
 - Applications from tenants compatible with the landlords enterprise (Christian Mission organisation) are invited.
- 24 Hour Access Control and situated in a secure business park with own entrance.

Features

Building Name	TWR Building		
Zoning	Commercial		
Exterior		Sizes	
Covered Parking Bays	8	Floor Size	187m ²

